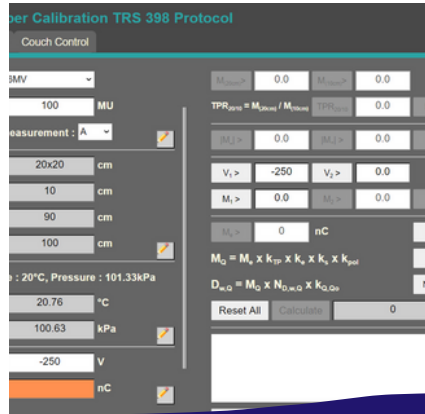
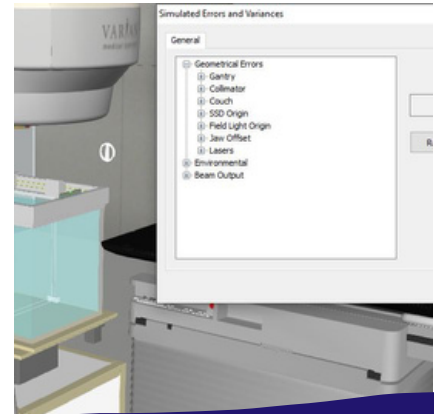


Physics Flex

Simulate Physics dosimetry and QC workflows.



Access the VERT Physics software



Simulate calibration errors on the Linac



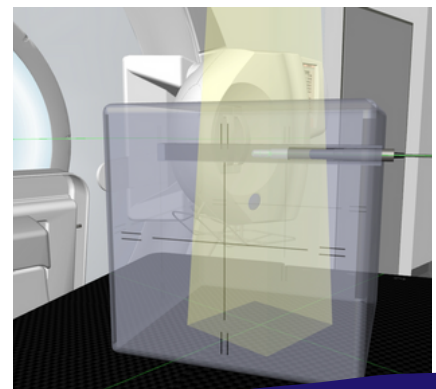
Replicate clinical workflows



Implement competency assessments



scalable solution to suit your teaching classroom



Simulate complex machine calibrations



Physics Flex

Physics Flex provides interactive simulation of the Linac and related processes (treatment, dosimetry and machine QC) to enhance the classroom discussions of radiation therapy physics training programmes.

Current tools include end to end simulation of TRS398 (MV Photon and Electron) dosimetry protocol processes, water phantom dosimetry, small field dosimetry support and simple QC processes. Support for TG51 and other dosimetry protocols are under development. The virtual Linac has embedded 6MV, and 15MV beams with typical dosimetric characteristics; key functions of the Linac can be mis-calibrated to explore the implications. E-learning features support the creation of instructional material, recording of information and knowledge assessment.

Physics Flex is a scalable software subscription to facilitate the single user for lecturing or to have multiple independent versions to allow a group to work through processes individually or in a group session.

VERT Physics Software Subscription

VERT Physics Software Package includes the following:

1 instructor licence for our Physics training software.

(Choice of a selection of Varian or Elekta machine models)*

The software will require a PC or Laptop with the recommended specification.

A Vertual representative will approve the hardware prior to software being uploaded, this may be done by a Vertual team member online or by a distributor. Hardware can be purchased by Vertual on behalf of the customer, this will be quoted for separately.

VERT will not run on a virtual machine, and the product is not supported for use in a virtual environment (such as VMWare, Citrix, AWS etc).

Software super-user training

Software training and curriculum integration support will be provided by the Vertual team.

This will be carried out online. If onsite training is preferred this will be quoted for separately.

Up to date software and support

You will receive the very latest VERT Physics software and comprehensive support for the duration of the subscription.

**Machine model packages include the following linac models:*

Varian: TrueBeam, iX and CX

Elekta: Versa HD, Agility, Synergy and Synergy Platform

License options and Conditions:

Licences

- *The licence is per institution per annum with an option to add further licences.*
- *1 licence for Physics Flex is included to install on compatible hardware.*
- *Additional licence add on per user per annum is available*

Payments

- *Annual payment by electronic bank transfer. If annual payments are not maintained, access to the software will be restricted to view only.*

Package upgrades

We have a number of options available to enhance your subscription including an upgrade path to a full VERT Flex licence. Please discuss these with your local VERT representative.